

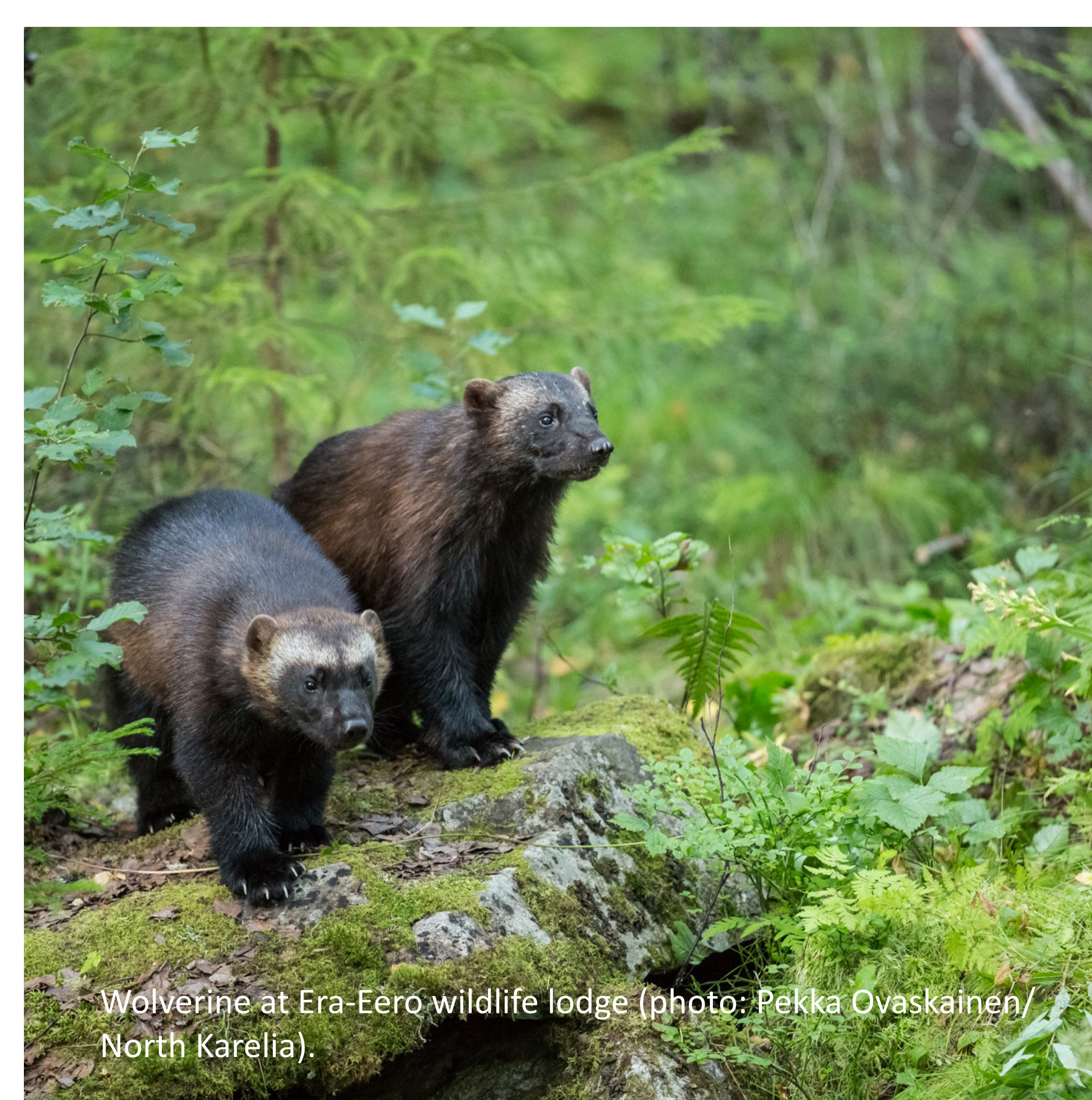


SHAPE

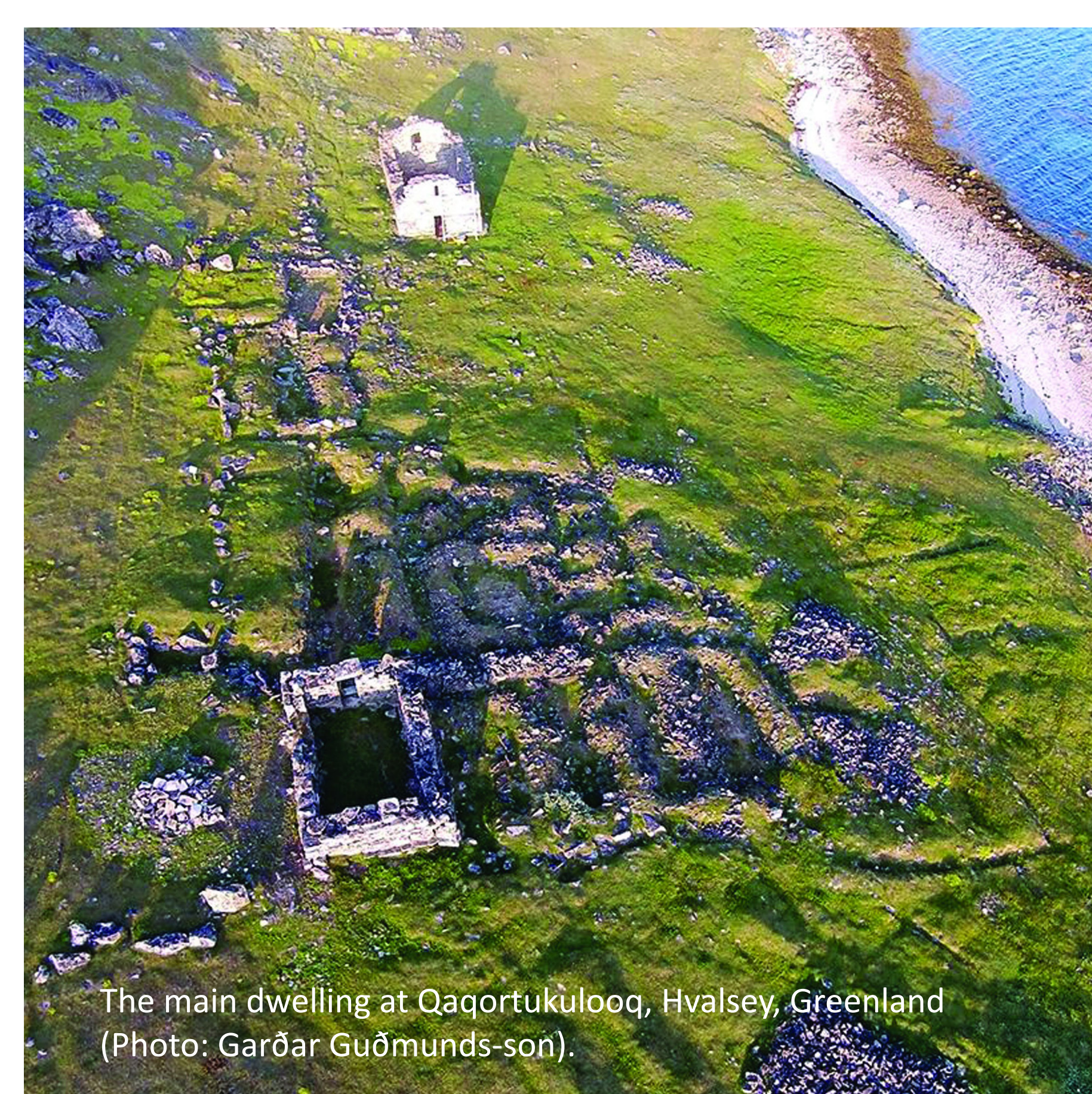
Sustainable Heritage Areas: Partnerships for Ecotourism



Nordhordland Candidate Biosphere Reserve, Norway (photo: Linda Sæle Kjenes)



Wolverine at Era-Eero wildlife lodge (photo: Pekka Ovaskainen / North Karelia).



The main dwelling at Qaqortukuloq, Hvalsey, Greenland (Photo: Garðar Guðmunds-son).



Galloway & Southern Ayrshire Biosphere Reserve, Scotland (photo: Allan Wright Photography)



The volcanic landscape of Snaefellsnes attracts many tourists. Photo: Kjersti Isdal.



Traditional dancers in Wester Ross, Scotland (photo: Wester Ross Biosphere).

SHAPE Partners:

- § University of the Highlands and Islands, Scotland
- § Karelia University of Applied Sciences, Finland
- § Wester Ross Biosphere Reserve, Scotland
- § Galloway & Southern Ayrshire Biosphere Reserve, Scotland
- § Snaefellsnes Regional Park, Iceland
- § Kujataa World Heritage Site, Greenland
- § North Karelia Biosphere Reserve, Finland
- § Nordhordland Candidate Biosphere Area, Norway

SHAPE works in Sustainable Heritage Areas with rich cultural and natural assets to support the development of innovative ecotourism initiatives.

New stakeholder partnerships with strong community involvement will implement and market new initiatives that recognise and promote the unique identity of each area while preserving and enhancing its heritage and supporting its communities

Local stakeholders will have the opportunity to participate in learning journeys to Sustainable Heritage Areas in other countries to discuss common challenges and share knowledge and experience.



Northern Periphery and Arctic Programme
2014–2020



EUROPEAN UNION

Investing in your future
European Regional Development Fund